

## **Civic Monthly Meeting Minutes**

**February 2, 2016**

Attendance : Al Marks, Ed Rohrbach, Liz Resko & Mick Fitzpatric

Attendance – Guest: Tom Wheeler, Kerri Well del Tufo and Jill Althouse-Altwood

Meeting commenced at 7:08 P.M.

Minutes: January Civic Monthly Meeting Minutes approved as presented.

### **Arden Craft shop/Museum repaving**

Tom representing Arden Craft Shop/Museum requested permission to repave three walkways and parts of parking lot. A visual to identifying areas to repave has been provided and is at end of minutes. Permanent material solution will be determined. It is within the right of way. Civic committee endorses these plans.

### **Field Theater**

Harold Kalmus reported to Civic via Albert, that no progress was made on theater walkway. Committee plans to refurbish benches this spring.

### **Street Signs**

Street signs will be completed this week

### **Labyrinth**

Reviewed work in progress with Civic and plan to attend tomorrow evening Officers Hours to discuss funding. Will obtain another estimate. Concerned that ADA has driven up cost from original estimate.

### **Drainage**

Weeds are impeding the flow of water on St. Martins Ln on left side of drain. Propose clear bush so water can drain.

Meeting Adjourned at 8:09 P.M.

Respectfully submitted

Elizabeth Resko

Village Town Secretary

**Attachment follows**

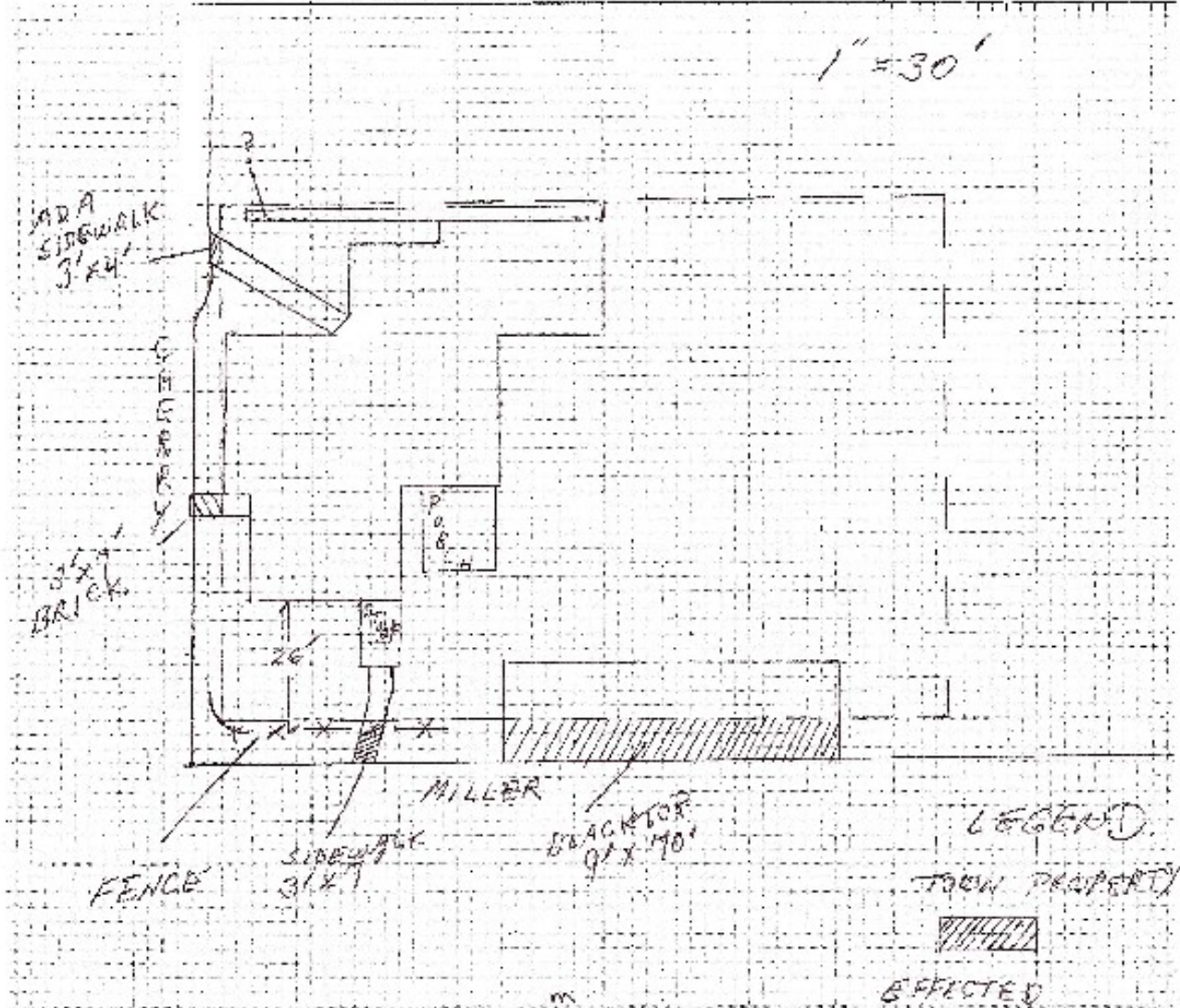
# RRI REGIONAL REPORTING

Insured: \_\_\_\_\_  
 Location: \_\_\_\_\_  
 Company: \_\_\_\_\_  
 Policy No. \_\_\_\_\_

ROOFING CODE FIRE ALARM FIRE EXTINGUISHER	FIRE HYDRANT FIRE ALARM FIRE EXTINGUISHER	FIRE HYDRANT FIRE ALARM FIRE EXTINGUISHER
FIRE ALARM FIRE EXTINGUISHER	FIRE HYDRANT FIRE ALARM FIRE EXTINGUISHER	FIRE HYDRANT FIRE ALARM FIRE EXTINGUISHER
FIRE ALARM FIRE EXTINGUISHER	FIRE HYDRANT FIRE ALARM FIRE EXTINGUISHER	FIRE HYDRANT FIRE ALARM FIRE EXTINGUISHER

SCALE: 1" = \_\_\_\_\_ feet • INCLUDE: Arrow indicating "North" direction; construction, dimensions and height of insured's building; construction, occupancy, height, distance to adjacent exposures; streets/roads; location and distance to hydrants; firewalls (wall thickness and height of parapet); and other pertinent data (fuel storage tanks, gasoline pumps, etc.)

SQUARE FOOTAGE:  
 BUILDING  PREMISES



EXPOSURES:  
 FRONT \_\_\_\_\_ RIGHT \_\_\_\_\_  
 REAR \_\_\_\_\_ LEFT \_\_\_\_\_

